

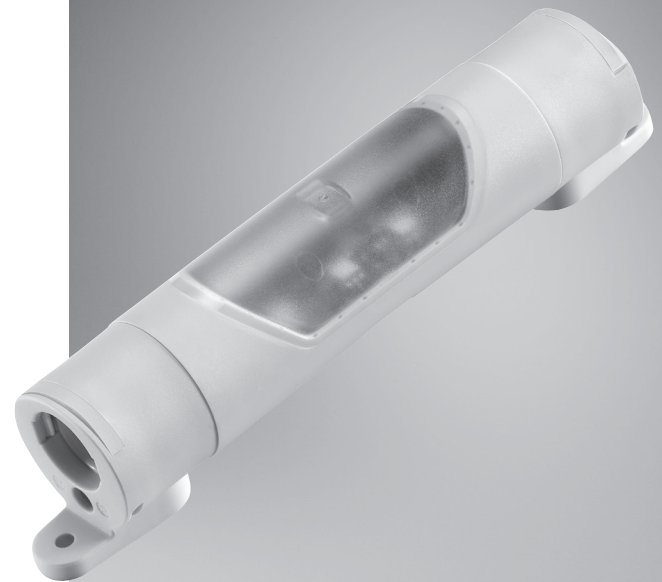
UNDER BED LIGHT UBL2

Features:

- *Light intensity: Up to 15 Lux*
- *Light colour: Warm white (Kelvin 2900 +/- 50)*
- *LED lifetime: 50,000 hours (at max. intensity)*
- *Cable: Modular plug RJ45 (6 Wires)*
- *Protection class: IPX6, IPX6 Washable*
- *Housing colour: Light grey (RAL 7035)*
- *Glass type: Formatted/Frosted*
- *Flammability rating: UL94 class V2*
- *Programmable from outside: Yes*
- *Current consumption:*
 - HW type 00:*
 - *Vbus 8V < 1 mA*
 - *Vper 40V < 5 mA*
 - HW type 01:*
 - *Vbus 8V < 1 mA*
 - *Vper 40V < 10 mA*

Usage:

- *Operating temperature: +5°C to +40°C*
- *Storage temperature: -10°C to +50°C*
- *Relative humidity: 10% to 80% at +30°C not condensing*
- *Atmospheric pressure: 700 to 1060hPa*
- *Approvals: EN62471, IEC60601-1:2005, 3rd edition (approvals are currently pending)*



MEDLINE
IMPROVING EFFICIENCY
CARELINE
IMPROVING EFFICIENCY

The Under Bed Light (UBL2) provides a powerful light with a good distribution. The

UBL2 is to be used for beds within hospitals, nursing homes and in homecare.

The Under Bed Light makes it easier for patients and other people in need of care to find their way at night in the dark to prevent falling accidents and to make them feel safe.

Combined with a LINAK hand control and OpenBus™ control box, the Under Bed Light system offers the following advantages:

- Available with different light intensities
- Hand control can be connected directly to UBL2
- IPX6 or IPX6 Washable
- UBL2 has two ports, making it easy to add to existing systems without adding extra ports in the CB
- Several UBL2 products can be mounted in series
- Direct and easy access for Service Data Tool (SDT)

Description:

There are 2 variants of the UBL2, a HW Type 00 "No microprocessor" and a HW type 01 "With microprocessor".

HW type 00:

The variant without microprocessor will always have the light switched ON.

Switching OFF the light will not be an option.

As a standard, the UBL2 without microprocessor can be ordered with 2 different light intensities, index 20 and index 60.

HW type 01:

The variant with microprocessor has the possibility to switch the light ON and OFF by key press (e.g. handset) or when a bit is present on the OpenBus.

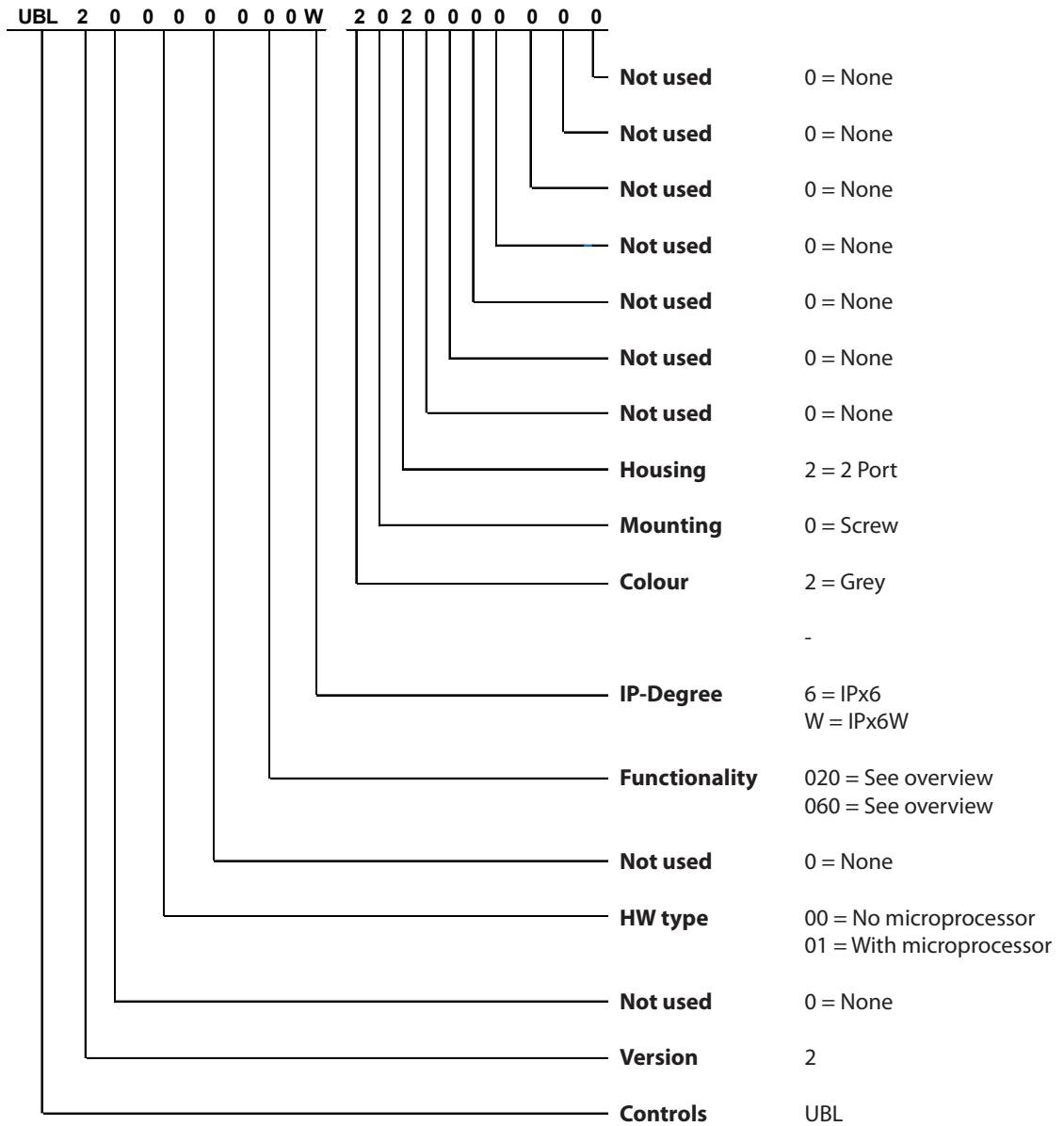
As a standard, the UBL2 with microprocessor can be ordered with 2 light intensities, index 20 and index 60.

UBL2 with light index 20 is meant to be used when there is a need for light on each side of the bed. The light index 60 is to be used when the UBL2 is placed directly under the bed. For further details, see next pages.

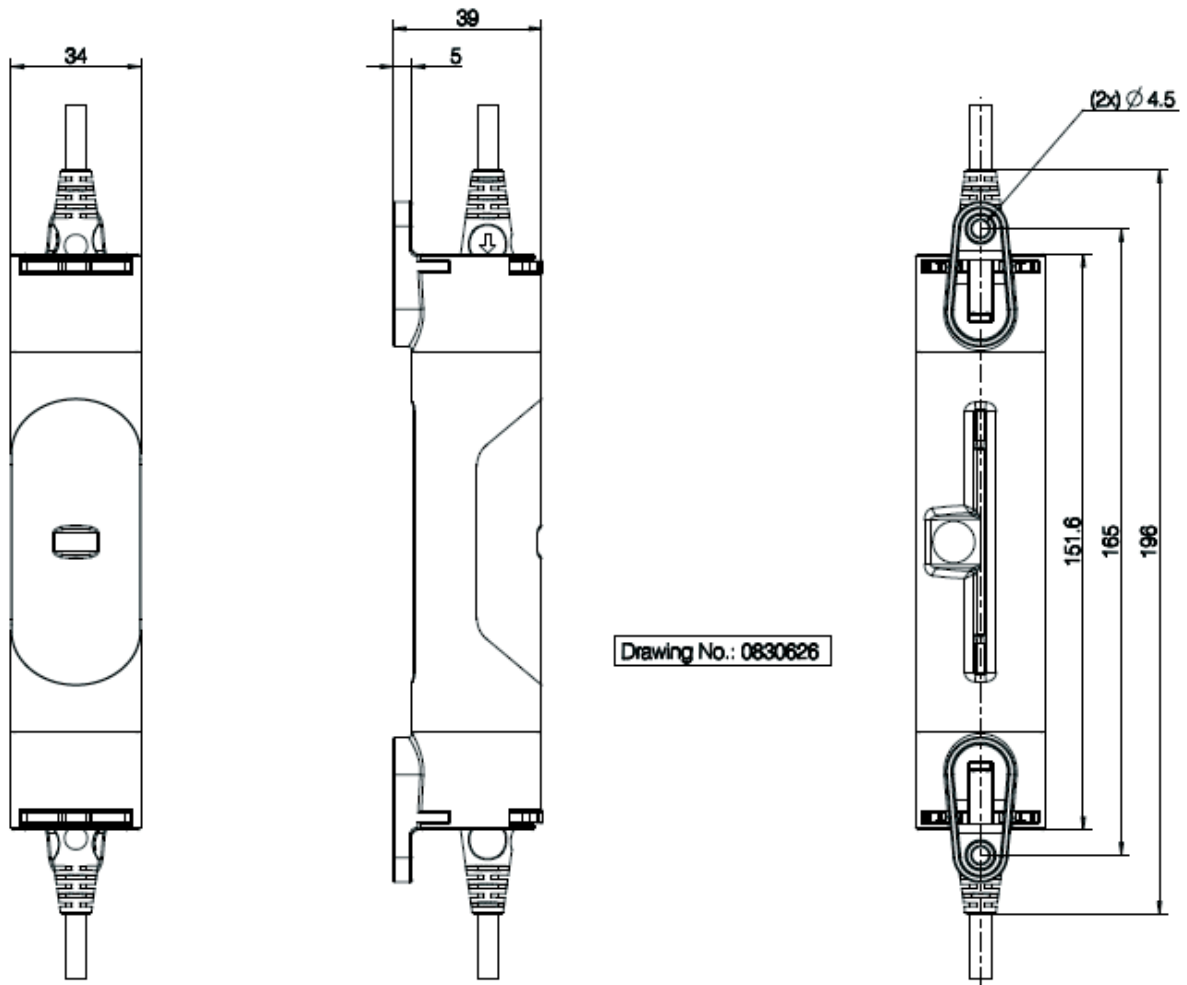
Functionality overview:

HW type	Functionality	Lux (index)
00	020	1.25 (20)
00	060	4 (60)
01	020	1.25 (20)
01	060	4 (60)

UNDER BED LIGHT 2
Ordering example:



Dimensions:



Drawing No.: 0830626

Drawing no.: 0830626

Terms of use

The user is responsible for determining the suitability of LINAK products for specific application. LINAK takes great care in providing accurate and up-to-date information on its products. However, due to continuous development in order to improve its products, LINAK products are subject to frequent modifications and changes without prior notice. Therefore, LINAK cannot guarantee the correct and actual status of said information on its products. While LINAK uses its best efforts to fulfil orders, LINAK cannot, for the same reasons as mentioned above, guarantee the availability of any particular product. Therefore, LINAK reserves the right to discontinue the sale of any product displayed on its website or listed in its catalogues or other written material drawn up by LINAK. All sales are subject to the Standard Terms of Sale and Delivery for LINAK. For a copy hereof, please contact LINAK.